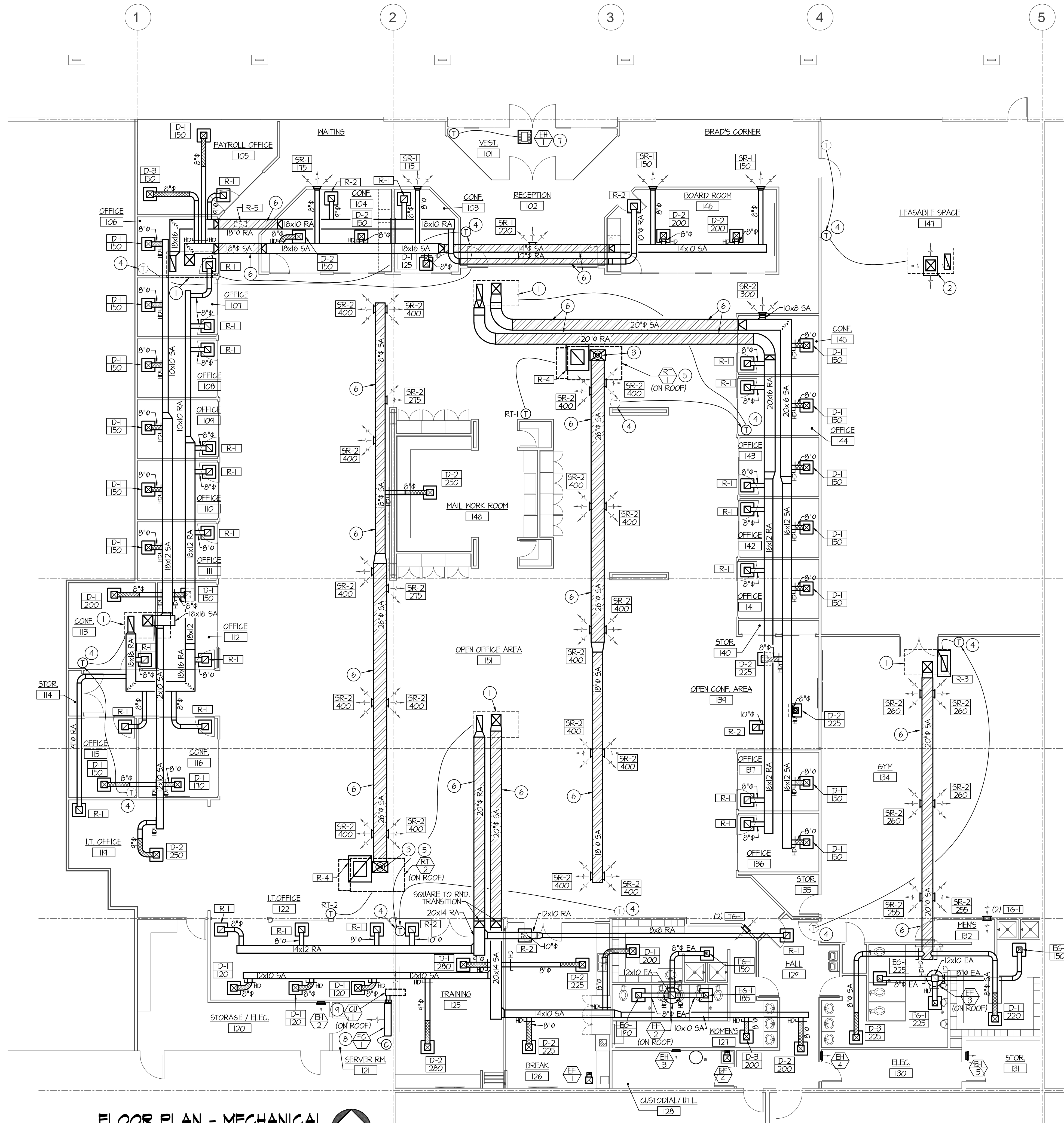


F:\M\1016 BRAD HALL OFFICE\1016 ML.dwg Jun 24, 2019 - 3:10pm



FLOOR PLAN - MECHANICAL
SCALE: 1/8" = 1'-0"
North

PLAN NOTES:

- 1 EXISTING ROOFTOP UNIT TO REMAIN. REMOVE EXISTING DUCTWORK AND INSTALL NEW DUCTWORK, GRILLES AND DIFFUSERS AS SHOWN.
- 2 EXISTING ROOFTOP UNIT WITH CONCENTRIC TO REMAIN.
- 3 INSTALL UL RATED SMOKE DETECTOR IN SUPPLY AIR DUCT FOR EMERGENCY FAN SHUT-DOWN OF ROOFTOP UNIT AND INTERLOCK WITH ROOFTOP UNIT.
- 4 RELOCATE EXISTING THERMOSTAT TO NEW LOCATION AS SHOWN. EXTEND WIRING AS REQUIRED.
- 5 INSTALL NEW ROOFTOP UNIT ON ROOF ON FACTORY ROOF CURB. FLASH AND SEAL INTO EXISTING ROOF AND SEAL WEATHERTIGHT. FOR COST BREAKDOWN PURPOSES, THIS ENTIRE SYSTEM TO BE ALTERNATE #1.
- 6 RUN EXPOSED SPIRAL DUCTWORK AS HIGH AS POSSIBLE. CAREFULLY COORDINATE FINAL LOCATION WITH LIGHTS AND OTHER EQUIPMENT.
- 7 INSTALL ELECTRIC HEATER IN CEILING GRID. COORDINATE FINAL LOCATION WITH LIGHTS AND OTHER EQUIPMENT LOCATED IN CEILING GRID.
- 8 INSTALL FAN COIL UNIT ON WALL AS HIGH AS POSSIBLE.
- 4 INSTALL NEW CONDENSING UNIT ON ROOF ON 4x4 REDWOOD RAILS WRAPPED IN ROOFING MATERIAL. DROP REFR. PIPING DOWN THRU ROOF AND CONNECT TO FAN COIL UNIT LOCATED ON WALL. SEAL ROOF PENETRATION WEATHERTIGHT.



BRENT A. MCFARLAND AR-2561
STATE OF IDAHO
JRW & ASSOCIATES
1152 BOND AVENUE - SUITE A REGBURG, IDAHO 83440
WWW.JRW.COM VOICE (208) 239-2309 FAX (208) 359-2271

CONSULTANTS:
MECHANICAL ENGINEERING
ENGINEERED SYSTEMS ASSOC.
1355 East Center
Pocatello, Idaho 83201
(208) 233-0501
Fax (801) 233-0529
ELECTRICAL ENGINEERING
PAYNE ENGINEERING INC.
1823 E. Center St.
Pocatello, Idaho 83201
(208) 232-4439
Fax (208) 232-1435

PROJECT: **Brad Hall and Associates Office** IDAHO FALLS, IDAHO
DRAWING TITLE: **MECHANICAL FLOOR PLAN**

#	DATE	COMMENT

ORIGINAL DRAWING SIGNED BY: DWAYNE C. SUWEEKS
DATE ORIGINAL SIGNED: Jun 24, 2019
ORIGINAL ON FILE AT ENGINEERED SYSTEMS ASSOCIATES
1355 EAST CENTER, POCATELLO, IDAHO 83201

PROFESSIONAL ENGINEER REGISTERED 5762 STATE OF IDAHO DWAYNE C. SUWEEKS
Engineered Systems Associates
1355 EAST CENTER POCATELLO, IDAHO 83201
PHONE: (208) 233-0501
FAX: (208) 233-0529
EMAIL: eso@engsystems.com
ESA JOB NUMBER: 19018

REVISION:
DRAWN BY: SR JOB NO: T10
CHECKED BY: DCS DATE: JUNE 2019
PLOT DATE: 5/24/19
DRAWING NO. FILE: M.I.
OF -